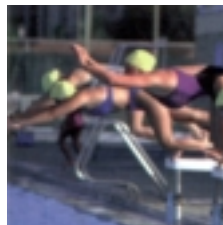
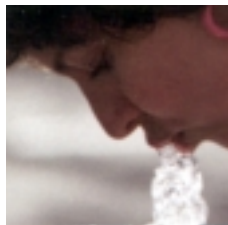


Contributed by the Gas Chlorine Education Committee



# Gas Chlorine Education

## Committee Launches Chlorine Safety Campaign

The Gas Chlorine Education Committee announced the launch of an industry-wide campaign entitled, "Gas Chlorine: The One and Only Choice for Water Disinfection." The year-long campaign takes aim at unsubstantiated reports questioning the safety of gas chlorination.

"There are numerous myths and misconceptions circulating within the industry about the safety and efficacy of gas chlorination, most of them based on inaccurate reports in the media," said Eric Howie, a sales manager at Piedmont Chlorinator Sales and member of the Gas Chlorine Education Committee. "This campaign was launched to educate water

disinfection decision makers about the inaccuracies surrounding gas chlorine and prove that gas chlorine provides a safe, cost-effective and efficient water disinfection option."

The cornerstone of the campaign is a newly developed brochure entitled, *Don't Let a Number of Myths Contaminate Your Perception of Gas Chlorination*. The brochure provides the facts regarding the use of gas chlorine to avoid water contamination and offers a comparison of the three available forms of chlorine: gas chlorine, sodium hypochlorite (liquid bleach) and calcium hypochlorite (granules or tablets). Each form is examined for strength maintenance, cost effectiveness and safety.

"The numbers really tell the story," continued Howie. "For example, gas chlorine is 100 percent elemental chlorine and the only form that will

### Facts About Gas Chlorination

There are three forms of chlorine used to treat water, and the following is how those forms differ in strength and efficacy, cost and safety.

#### Strength

- Gas chlorine is 100 percent elemental chlorine and remains full strength no matter how long it is stored.
- Calcium hypochlorite loses strength as soon as it is open.
- Sodium hypochlorite loses up to 50 percent of its strength within 90 days of being opened.

#### Dollars and Sense

- A year's supply of gas chlorine costs \$12,000.
- Sodium costs \$34,560 per year.
- Calcium costs \$54,000 per year.

#### Safety Issues

- 87.5 percent of incidents are related to sodium chlorine.
- Out of 69,804 chlorine exposures reported a year, only 9 percent are from chlorine gas.

retain its full strength no matter how long it is stored. Gas chlorine can save users more than \$20,000 a year over sodium hypochlorite or calcium hypochlorite. In addition, gas chlorine is monitored by government safety regulations, while the others are not." **WQP**

For more information on gas chlorine, call the GCEC at 888-280-0047.